

ASSEMBLY GUIDE
ILLUSTRATE

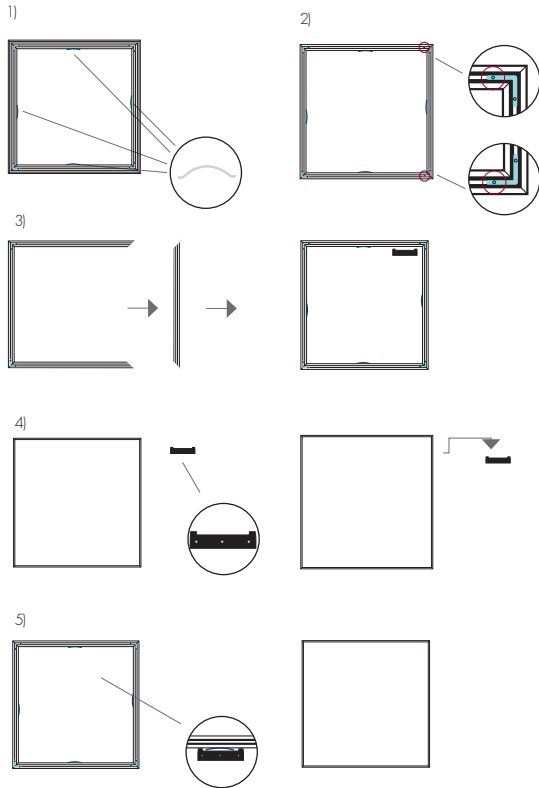


by Lassen.
Copenhagen

ILLUSTRATE

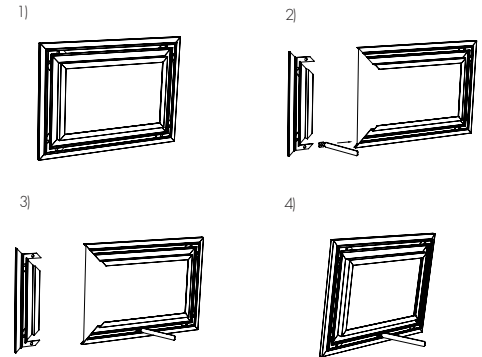


INSTRUCTIONS FOR HANGING



- 1) Remove all metal clips behind the frame.
- 2) Loosen the two screws on the chrome brackets.
- 3) Gently pull the frame mouldings apart. Slide in the photo and set the frame moulding back into place. Close the frame by tightening the screws and finally reattach the metal clips.
- 4) Mount the suspension bracket level on the wall using the screws with the two handles facing upwards.
- 5) Hang Illustrate on the bracket.

FOOTSTAND ASSEMBLY FOR A5 & A4 SIZES ONLY



- 1) Full preview of the frame.
- 2) Take out the side part of the frame. Slide in the foot stand in the bottom.
- 3) Place the foot stand approximately in the middle of the frame, making sure to tighten the screw.
- 4) Reassemble the frame and tighten all screws.